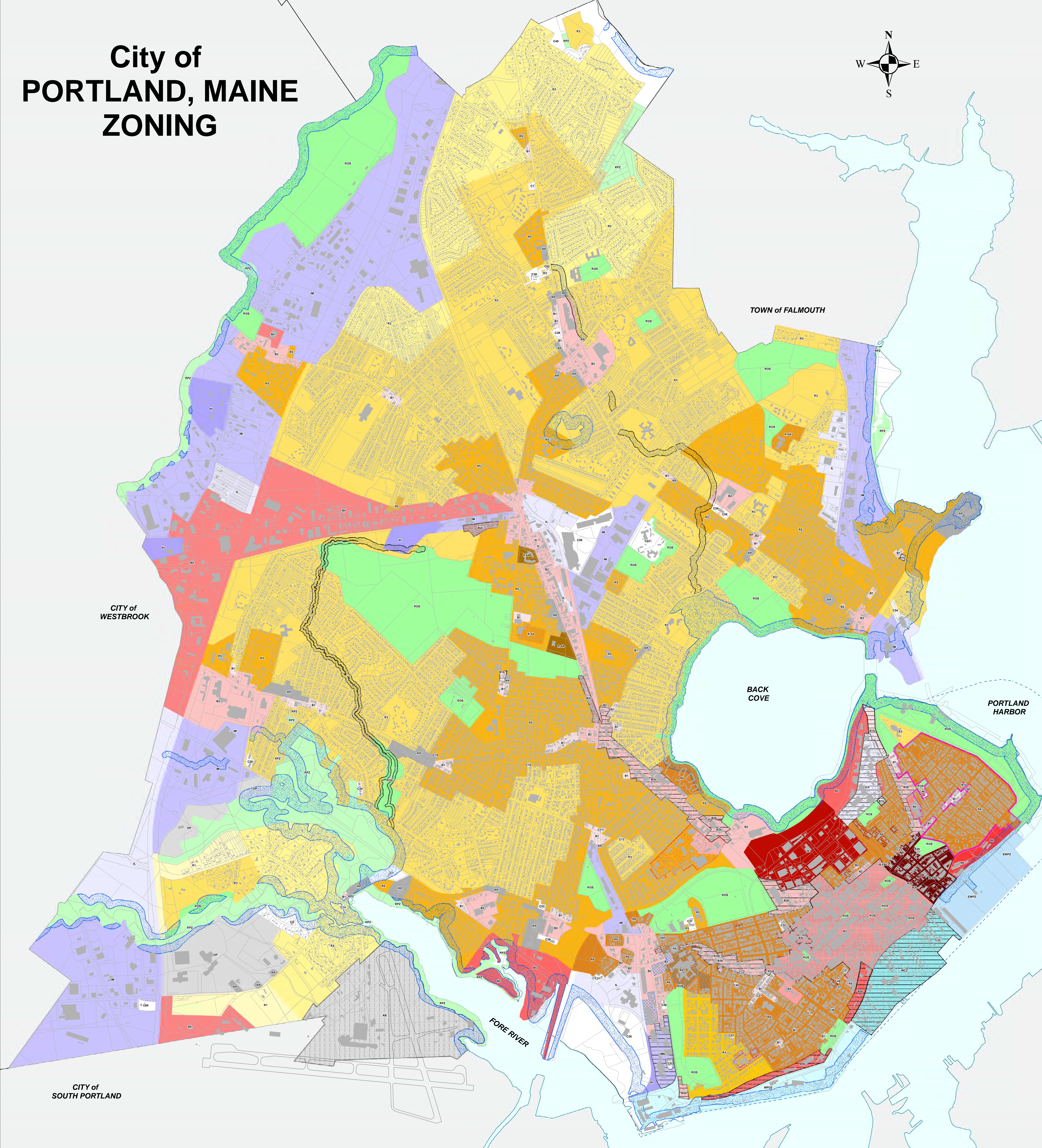
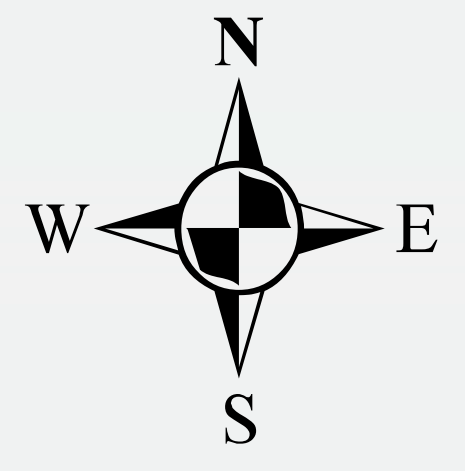


City of PORTLAND, MAINE ZONING



Legend

- sde.PORTGIS Parcels
- IR-1 Island Residential
- IR-2 Island Residential
- IR-3 Island Residential
- I-B Island Business
- I-TS Island Transfer Station
- R1 Residential
- R2 Residential
- R3 Residential
- R4 Residential
- R5 Residential
- R-6A Residential
- R-6B Residential
- RP Residential Professional
- AB Airport Business
- OP Office Park
- B1 Neighborhood Business
- B1b Neighborhood Business
- B2 Business Community
- B2b Business Community
- B2c Business Community
- B3* Downtown Business
- B3c Downtown Business
- B4 Commercial Business
- B5 Urban Commercial Business
- B5b Urban Commercial Business
- B6 Urban Commercial Business
- B7 Urban Commercial Business
- IS-FBC India St Form Based
- IL Industrial - Low Impact
- ILb Industrial - Low Impact
- IM Industrial - Moderate Impact
- IMb Industrial - Moderate Impact
- IH Industrial - High Impact
- RPZ Resource Protection
- ROS Recreation Open Space
- WPDZ Waterfront
- WCZ* Waterfront
- WSUZ Waterfront
- EWPZ Waterfront
- Conditional or Contract (see list); C55

ID	TYPE	DATE	ADDRESS
C1	Conditional RP	4/1/1992	372-388 Auburn St.
C2	Contract RB	5/16/1991	254 High St. / 22 Park St.
C7	Conditional RP	7/6/1990	Congress St. & Frost St.
C8	Conditional RB	12/15/1992	Congress St. & Garrison St.
C9	Contract MB	1/16/1995	75 St. John St.
C10	Contract B1	1/17/1996	12 Columbia St.
C11	Contract RB	3/23/1996	183 Brighton Av.
C13	Contract RB	4/13/1996	141 William St.
C14	Contract R2	6/31/1996	2 Wadd St.
C15	Contract RB	12/28/2004	183 Danforth St.
C16	Contract RB	10/4/1996	65 Rockwell St.
C17	Contract B1	1/15/1997	Sunset Av., Cliff Island
C19	Contract B2	1/11/1997	Sewall St.
C20	Contract L	12/21/97	Rockwell St.
C21	Contract B1	7/15/1998	192 Brackett St.
C23	Contract RB	1/5/2000	19 Locust St.
C24	Contract RB	10/5/2001	Shattuck St.
C25	Contract RB	10/19/2001	90 High St.
C26	Contract IH	1/2/2002	Fore River Site
C27	Contract RB	6/16/2002	88 Danforth St.
C28	Contract B1 RB	3/21/2003	49-42 Auburn St.
C29	Contract RB	5/6/2003	41 State St.
C30	Contract RB	8/3/2003	180 Auburn St.
C31	Contract RB	3/24/2006	49-69 Frederic St.
C32	Conditional RB	2/23/2005	70-88 Forest Av. / 209-233 High St.
C33	Conditional RB	10/20/2004	720 Congress St.
C34	Conditional RB	6/2/2005	602-624 Ocean Av.
C35	Conditional WCZ	12/14/2004	Custom House Wharf
C37	Conditional RB	9/24/2005	189 Park Av.
C38	Conditional B2	4/4/2005	50 Sewall St.
C40	Conditional	7/20/2005	Hope Av.
C42	Contract RB	6/17/1997	185 Canco Rd.
C43	Contract B2	9/12/2004	94 Hermon Av., Peaks Island
C45	Conditional RB	12/20/2005	250-258 Brackett St. / 63 Garrison St.
C46	Conditional RB	11/17/2006	121-136 Sheridan St.
C48	Conditional B2	11/17/2006	Valley St. & John St.
C49	Conditional RB	1/16/2008	Danforth St. & High St.
C50	Conditional L	3/25/2008	217 Road St. & 40, 70, 90, 118 Canco Rd.
C51	Conditional RB	7/20/2008	Congress St. & John St.
C53	Conditional RB	5/6/2009	Congress St. & Whitney Av.
C54	Conditional L	1/8/2010	Kensington St.
C55	Conditional RB	9/19/2011	183 Luther St., Peaks Island
C56	Conditional B2	10/13/2011	901 Washington Av.
C57	Conditional RB	6/18/2012	32 Thomas St.
C58	Conditional RB	11/15/2013	18 Congress St.
C60	Contract M	3/4/2013	2282 Congress St.

Legend

- sde.PORTGIS Parcels
- Stream Protection District
- Shoreland Zoning
- Downtown Entertainment (DEOZ)
- MMAC IOZ
- Munjoy Hill Neighborhood Conservation Overlay District
- Residential (R-6)
- Residential (R-7)
- University of Southern Maine (USM)
- Wayleave Core Subdistrict
- Wayleave Edge Subdistrict

The depiction of the Shoreland Zoning and the Stream Protection Districts are illustrative of the general location of such zones. The actual boundaries of these zones shall be determined by the measurement of the distance indicated on the maps from the normal high water line of the water body or the upland edges of the wetland vegetation. Where the measurement is not the same as the location of the boundary on the zoning maps, the measurement shall control, unless the zoning map indicates that the zoning boundary shall follow an existing property line.

Note: A shoreland zone is 250 feet wide, while a stream protection zone is 75 feet on either side of a stream.

Height Overlay Districts are in effect for the areas of Bayside Neighborhood & Downtown. Copies of the overlay maps are on file at the Department of Planning and Development.

The information contained on this map is compiled from past zoning maps, City Council orders and other documentation as depicted on the Map Summary of Zoning Documentation map on file in Portland's City Engineer's Archives Vault presently located at 212 Canco Rd and at the Department of Planning and Development located at 389 Congress Street.

**Adopted by Portland City Council
January 17, 2001
Effective February 17, 2001
Last revised February 24, 2021**

This Zoning Map of the City of Portland, Maine is provided for informational purposes only.

The current official zoning map is on file and available for reference in the Department of Planning and Development 874-8703.

Map prepared by the City of Portland's Department of Planning & Development and the Department of Public Works

